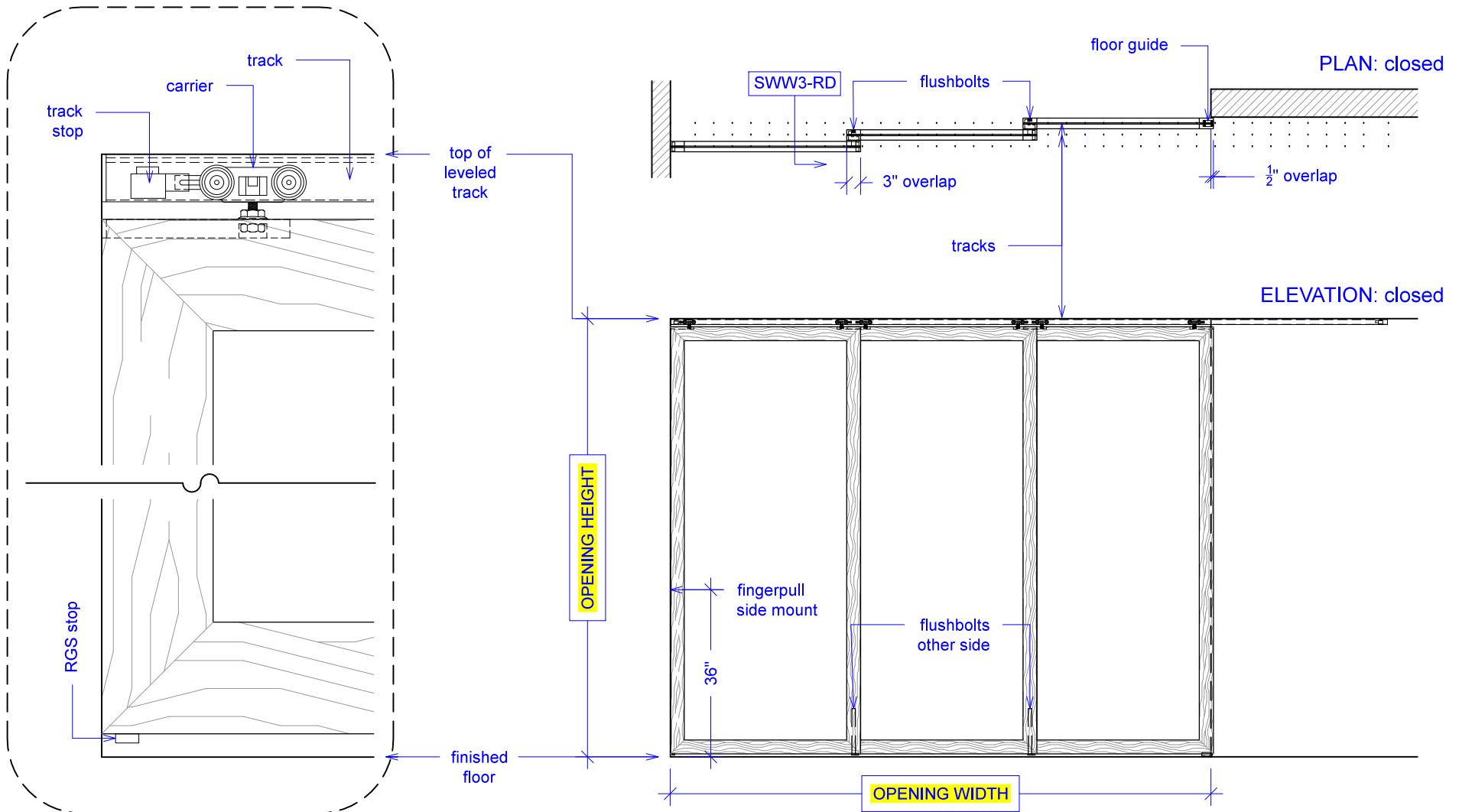




YOUR OPENING HEIGHT = PANEL + 2-3/8"
YOUR OPENING WIDTH = (PANEL x 3) - 6-1/2"

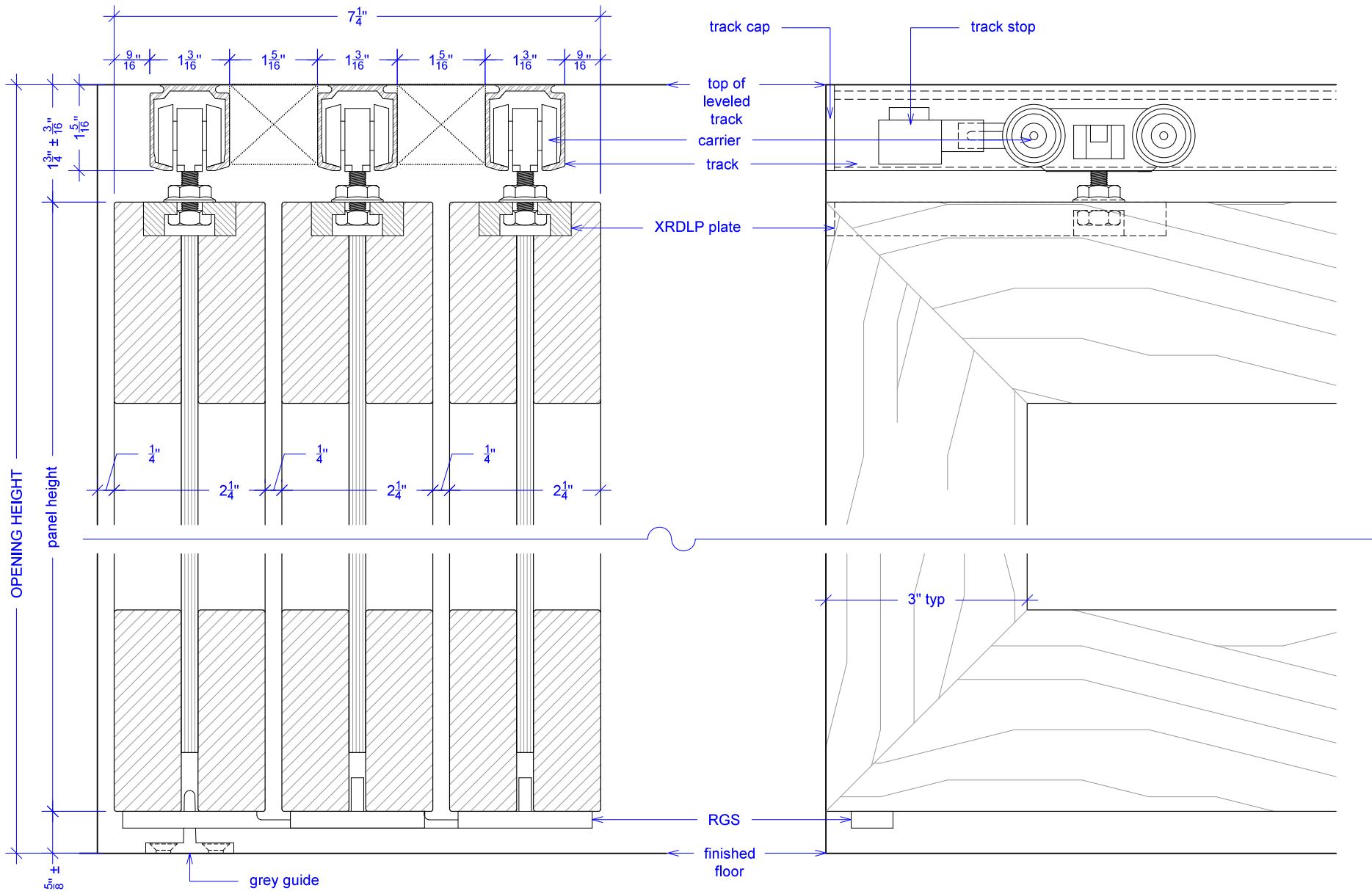


SWW3 - 225



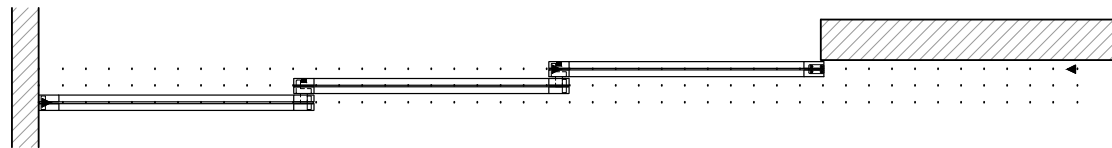
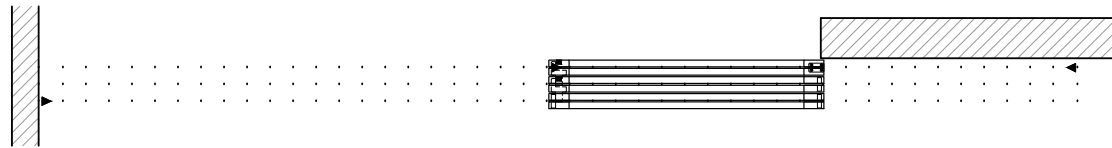
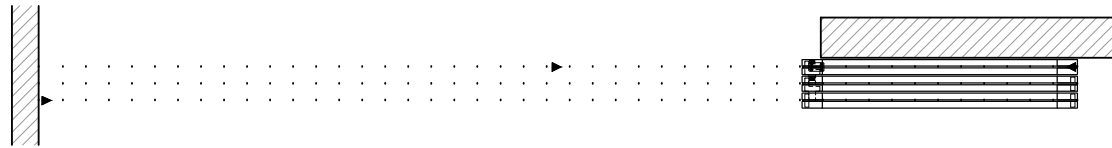
Important Notes:

Each panel weights approximately 85-100lbs. Secure tracks accordingly.
This page represents GENERIC system detail. Please refer to Elevation page
for your custom system configuration.









Important Notes:
Each panel weights approximately 85-100lbs. Secure tracks accordingly.
This page represents GENERIC system detail. Please refer to Elevation page
for your custom system configuration.



KEY:

-  track stop
-  left RGS hook
-  RGS stop
-  flushbolt