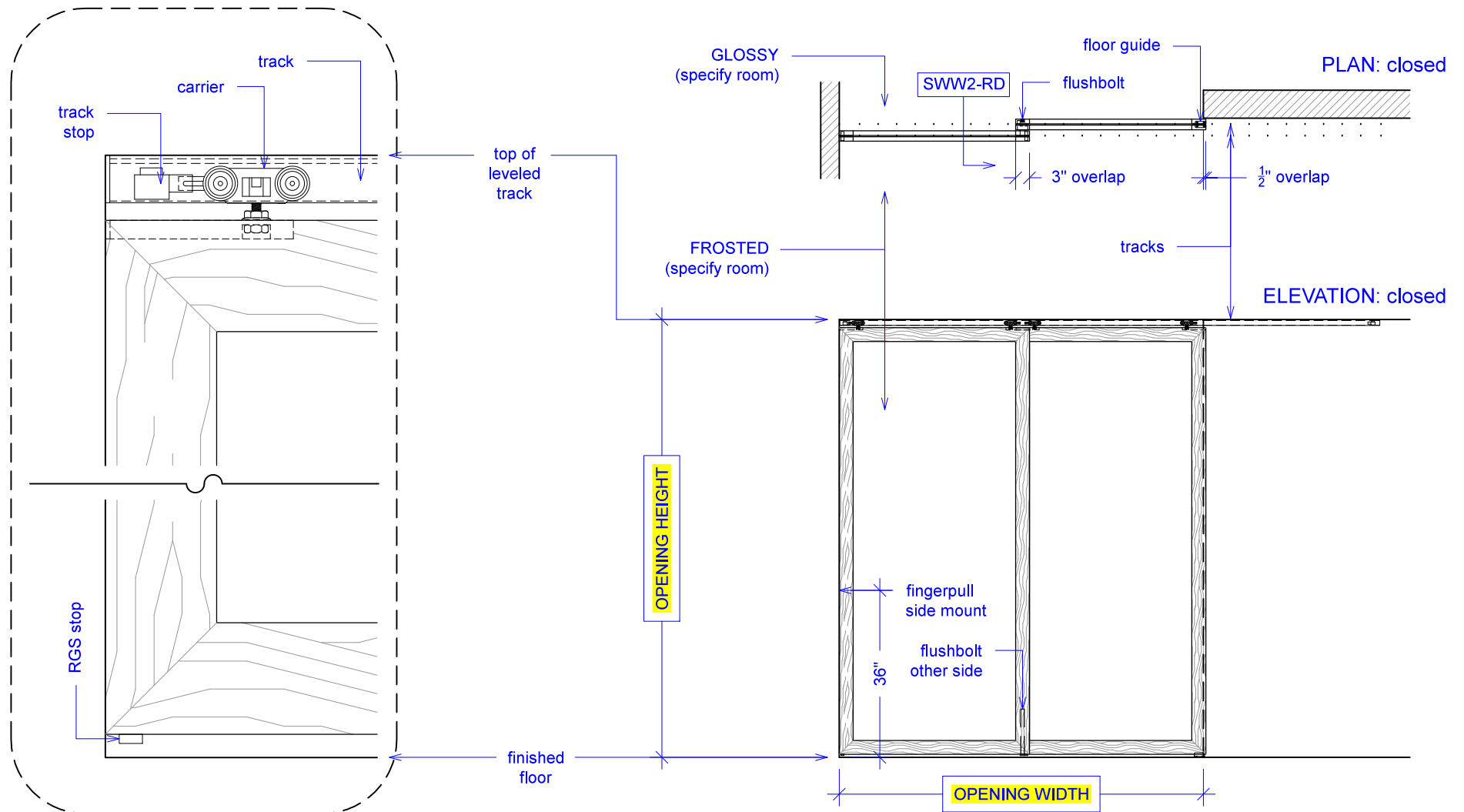




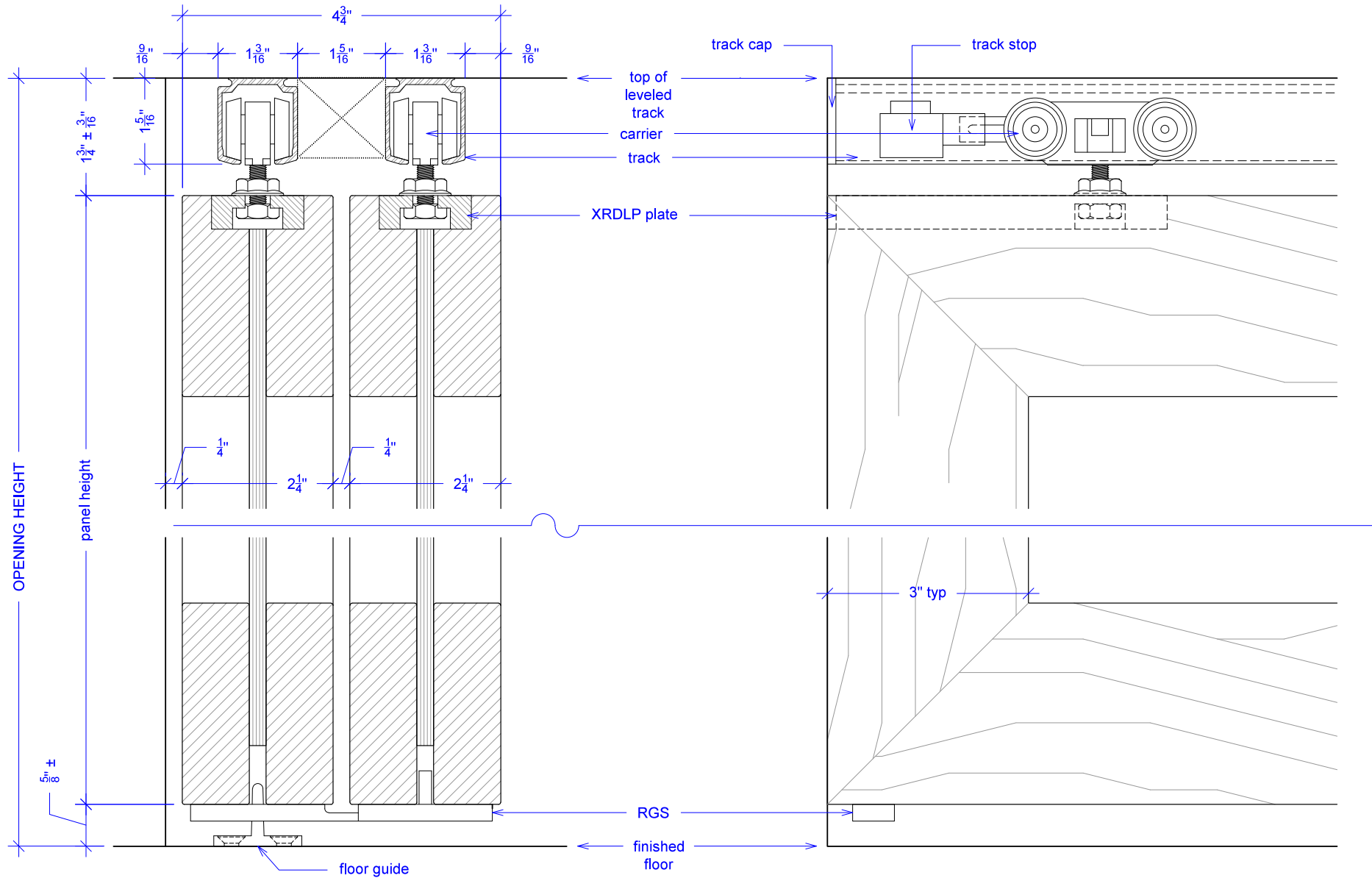
YOUR OPENING HEIGHT = PANEL + 2-3/8"
YOUR OPENING WIDTH = (PANEL x 2) - 3-1/2"



SWW2 - 225

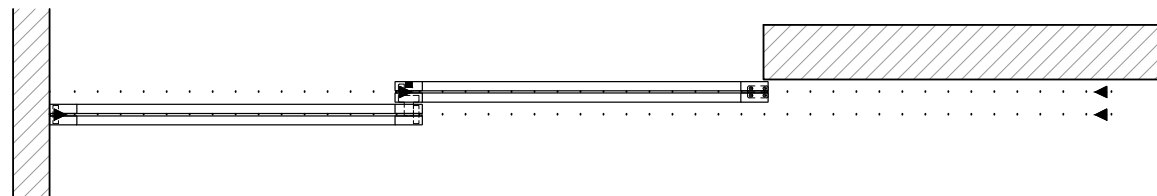
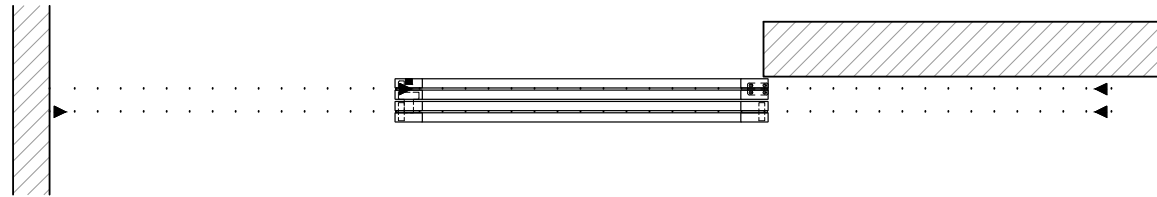
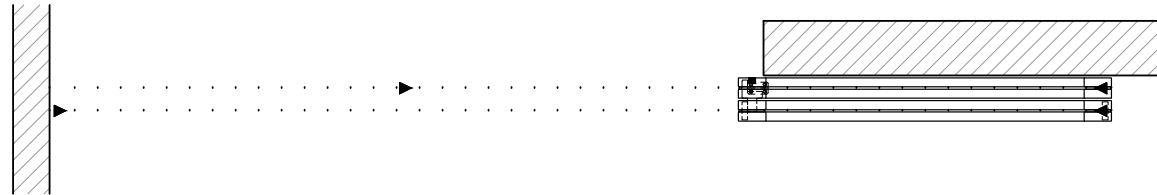


NOTE: each panel weights approximately 75-110 lbs.
Secure tracks accordingly.





NOTE: each panel weighs approximately 75-110 lbs.
Secure tracks accordingly.



KEY:

 floor guide	 track stop	 left RGS hook	 RGS stop	 flushbolt
---	--	---	--	---