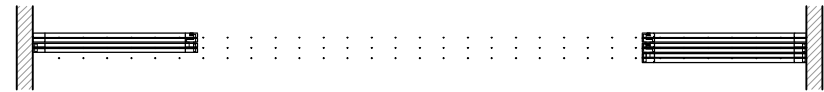


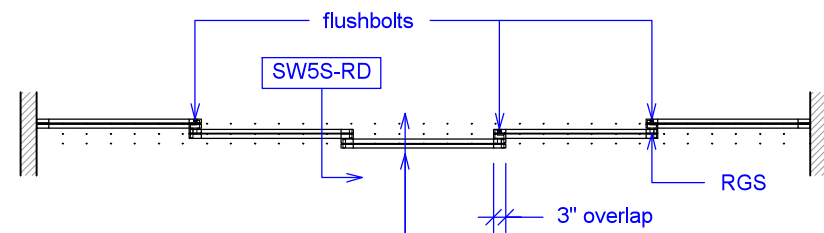


YOUR OPENING HEIGHT = PANEL + 3"
YOUR OPENING WIDTH = (PANEL x 5) - 12"

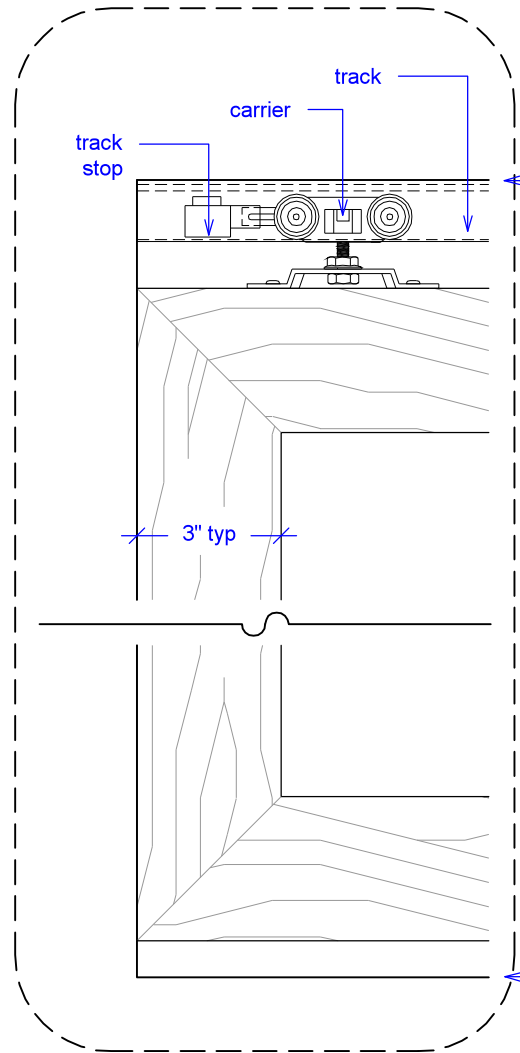
PLAN: open



PLAN: closed



ELEVATION: closed



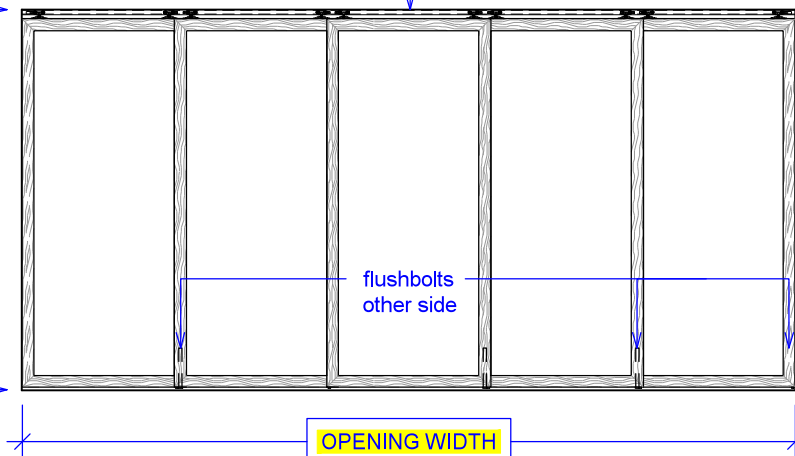
top of leveled track

3" typ

finished floor

OPENING HEIGHT

OPENING WIDTH

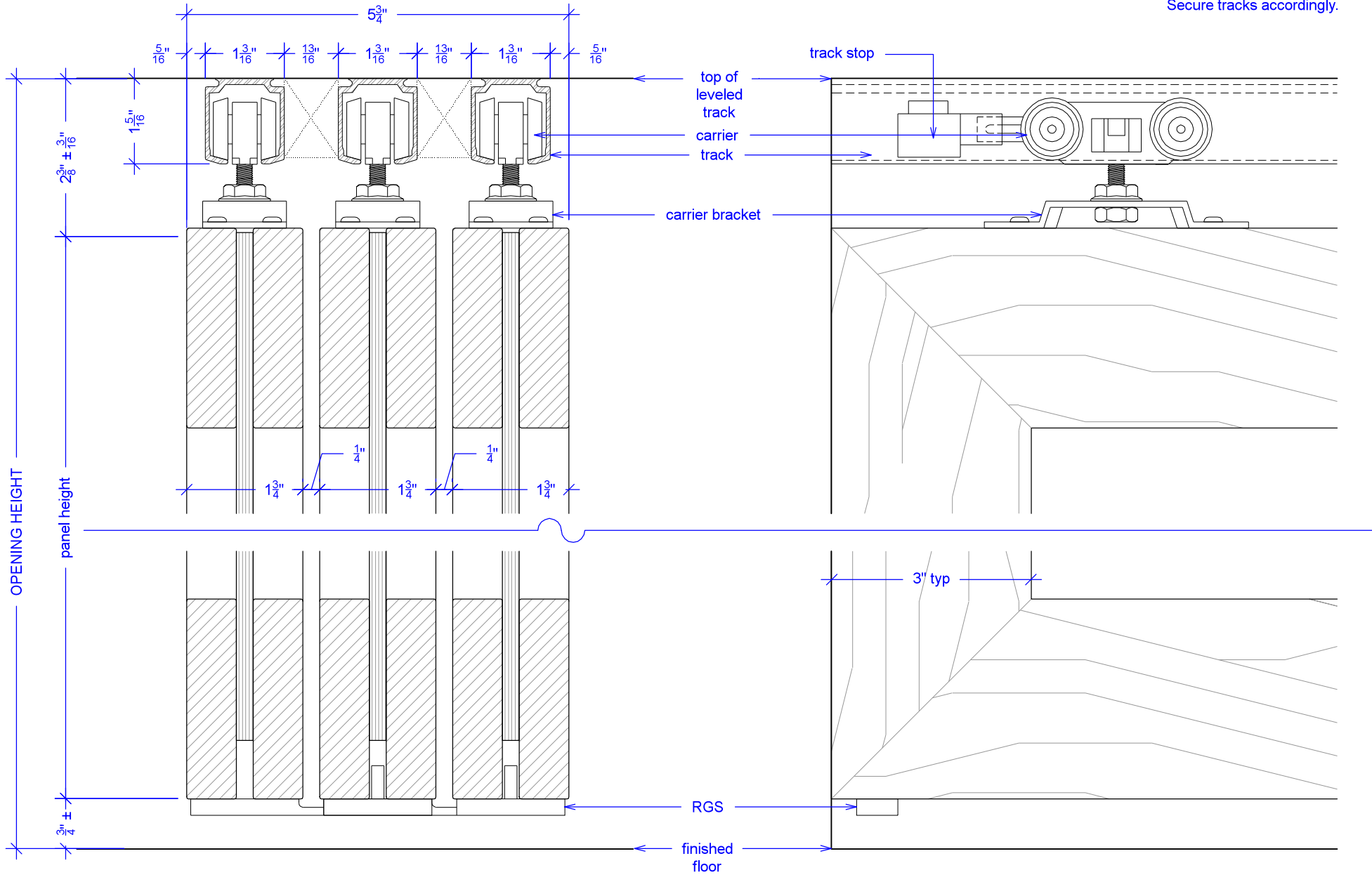


flushbolts
other side

SW5S - 175



NOTE: each panel weights approximately 75-110 lbs.
Secure tracks accordingly.





NOTE: each panel weights approximately 75-110 lbs.
Secure tracks accordingly.

