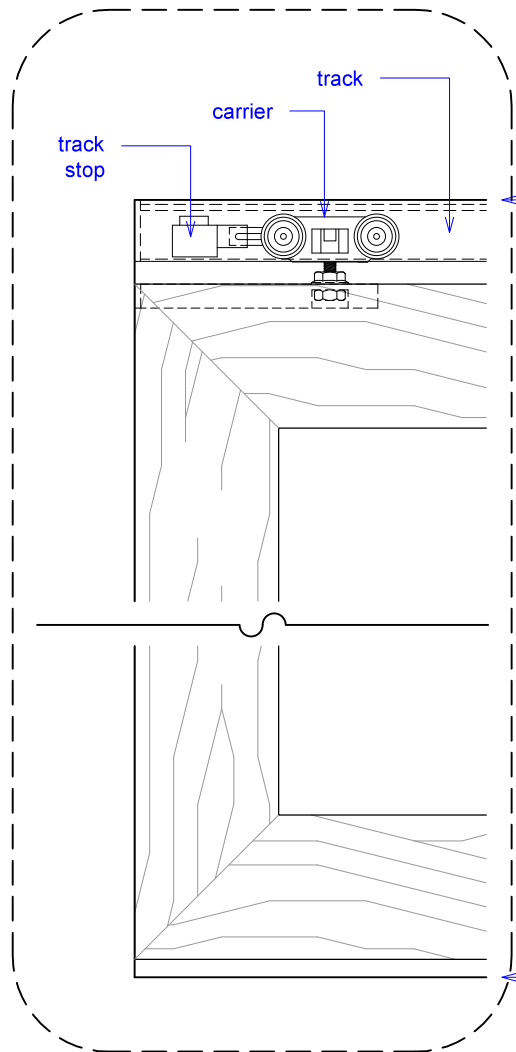




PLAN: open

YOUR OPENING HEIGHT = PANEL + 2-1/8"
YOUR OPENING WIDTH = (PANEL x 5) - 12"

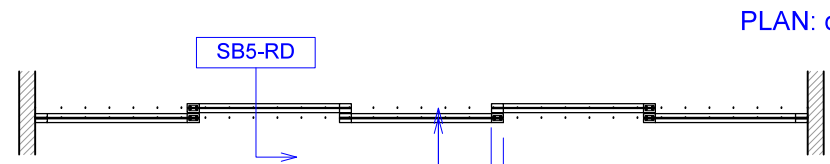
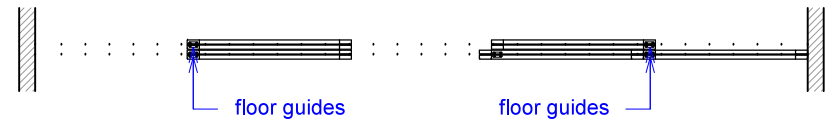


top of leveled track

finished floor

OPENING HEIGHT

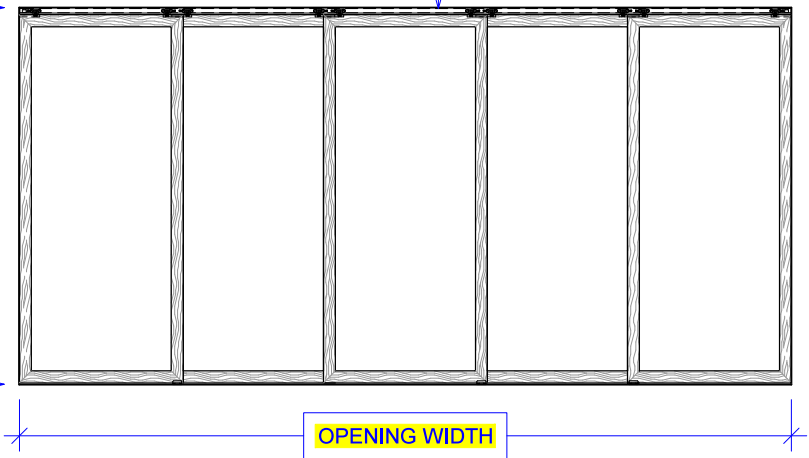
OPENING WIDTH



PLAN: closed

3" overlap typ.

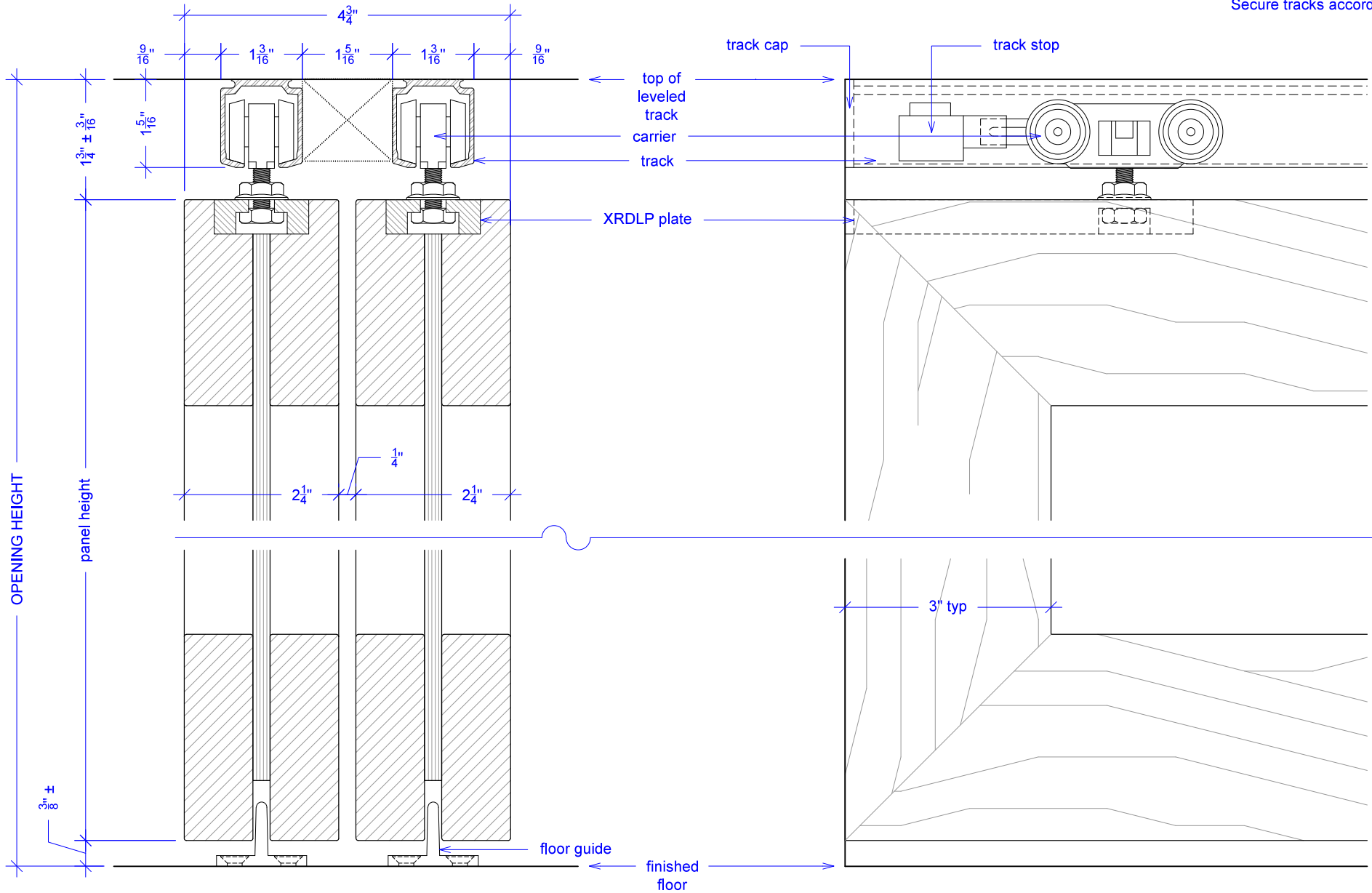
ELEVATION: closed



SB5 - 225



NOTE: each panel weights approximately 75-110 lbs.
Secure tracks accordingly.





NOTE: each panel weights approximately 75-110 lbs.
Secure tracks accordingly.

