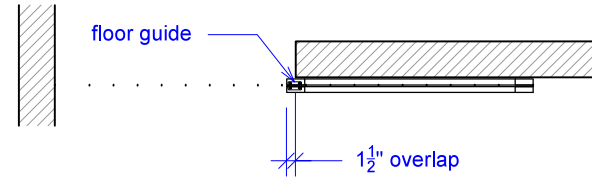
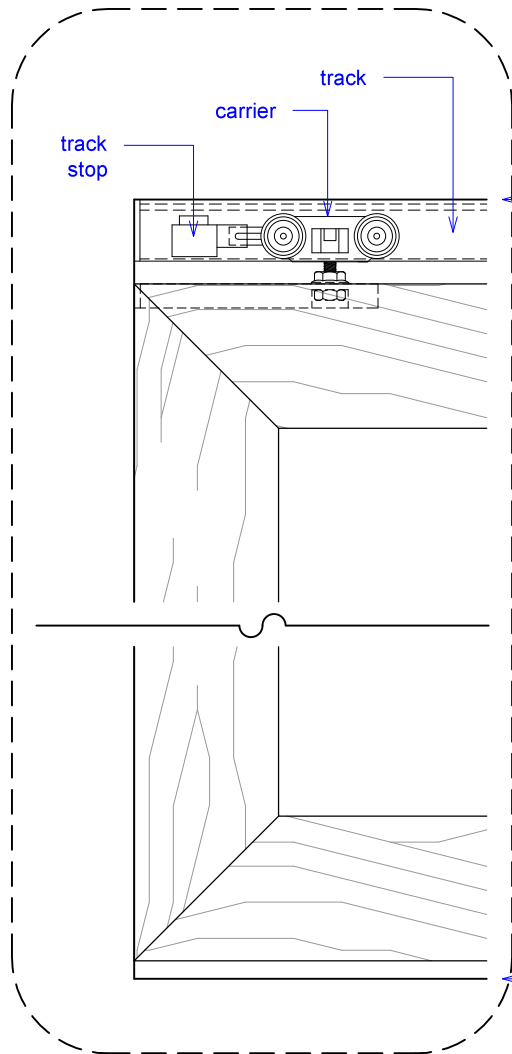


S1 - 150

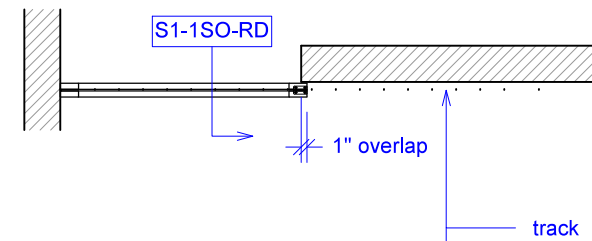


PLAN: open

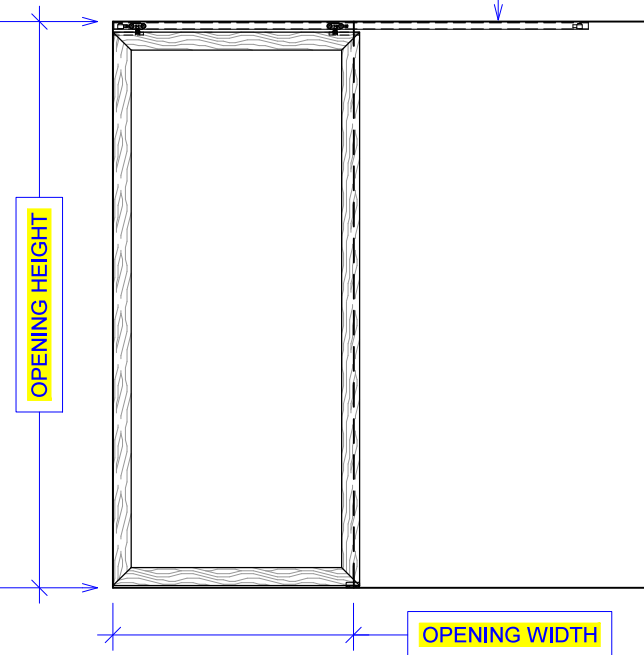
YOUR OPENING HEIGHT = PANEL + 2-1/8"
YOUR OPENING WIDTH = PANEL - 1"



PLAN: closed



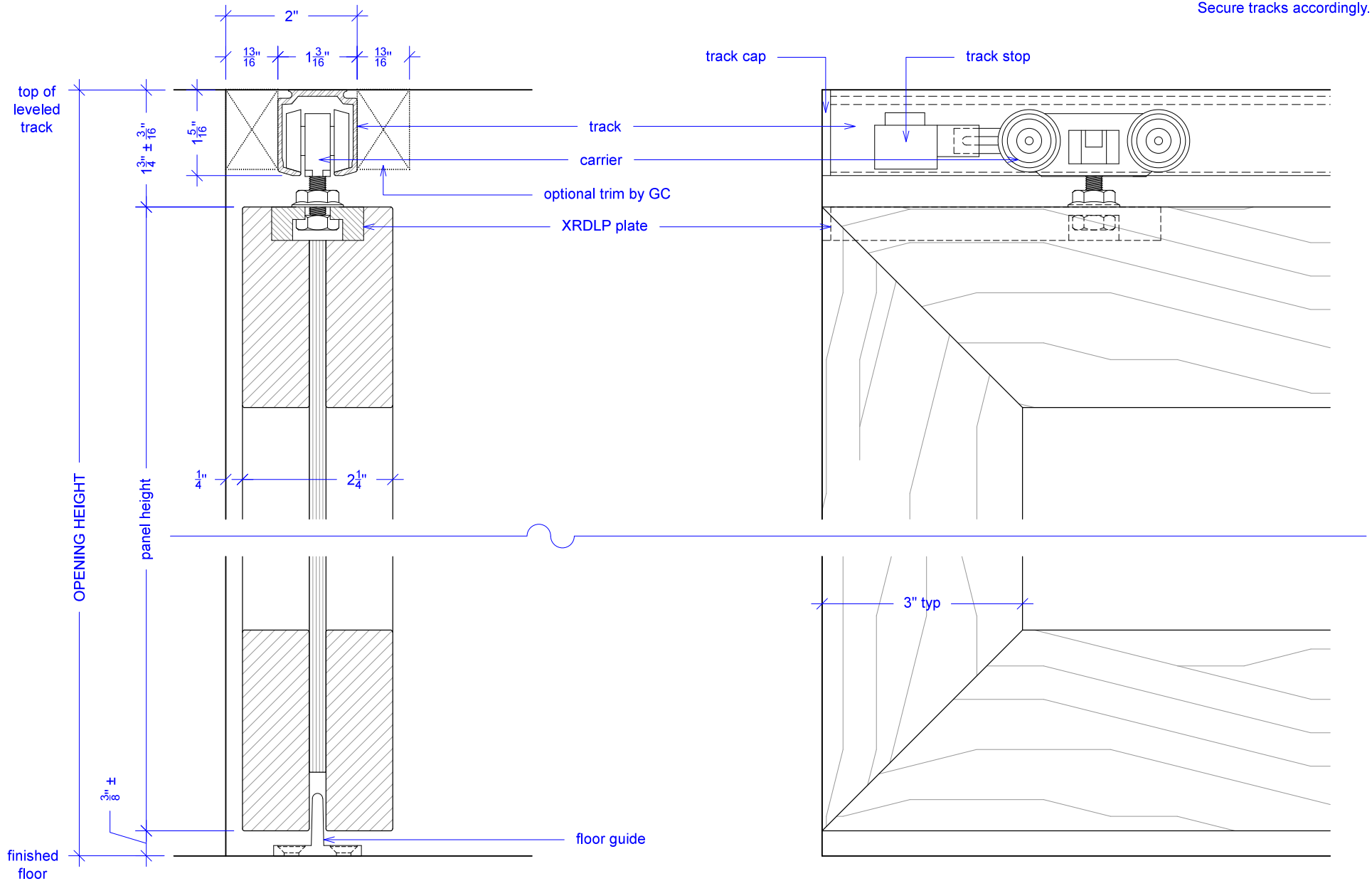
ELEVATION: closed



S1 - 150 - 225



NOTE: each panel weights approximately 75-110 lbs.
Secure tracks accordingly.



S1 - 150 Operation Overview



NOTE: each panel weights approximately 75-110 lbs.
Secure tracks accordingly.

