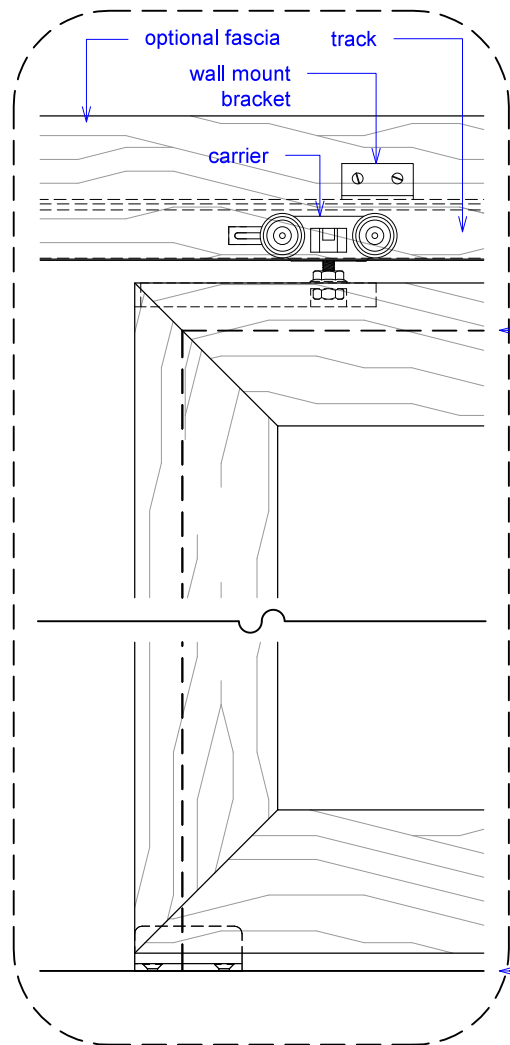


S2S - WM

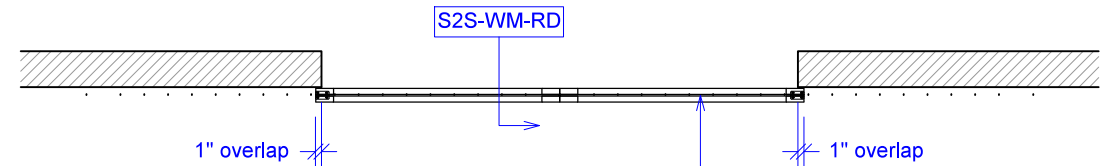


PLAN: open

YOUR OPENING HEIGHT = PANEL - 5/8"
YOUR OPENING WIDTH = (PANEL x 2) - 2"



PLAN: closed



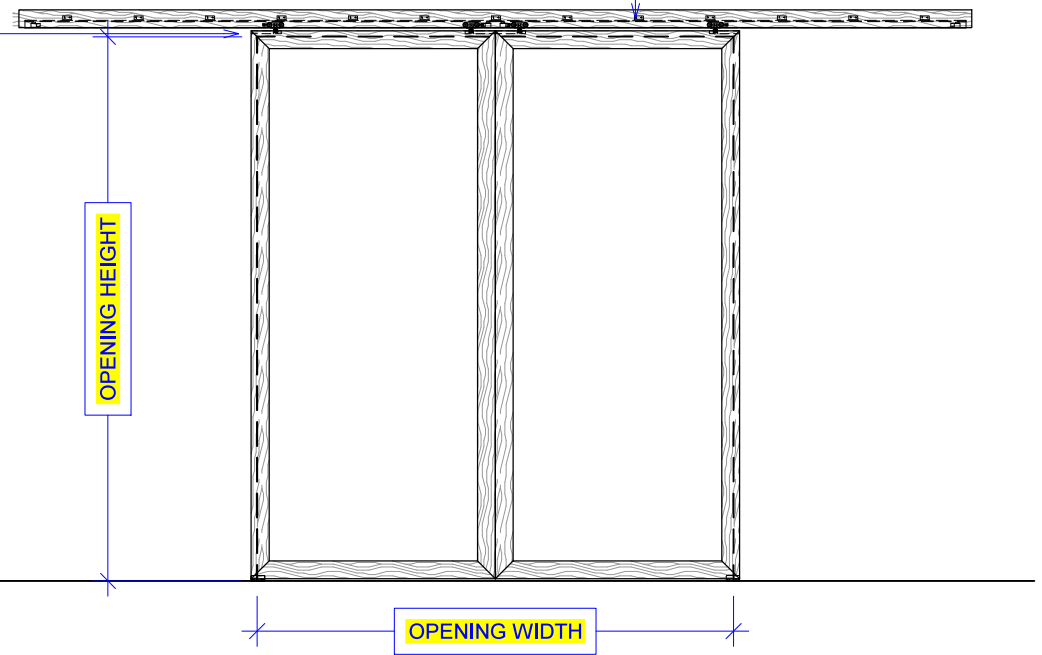
ELEVATION: closed

top of opening

finished floor

OPENING HEIGHT

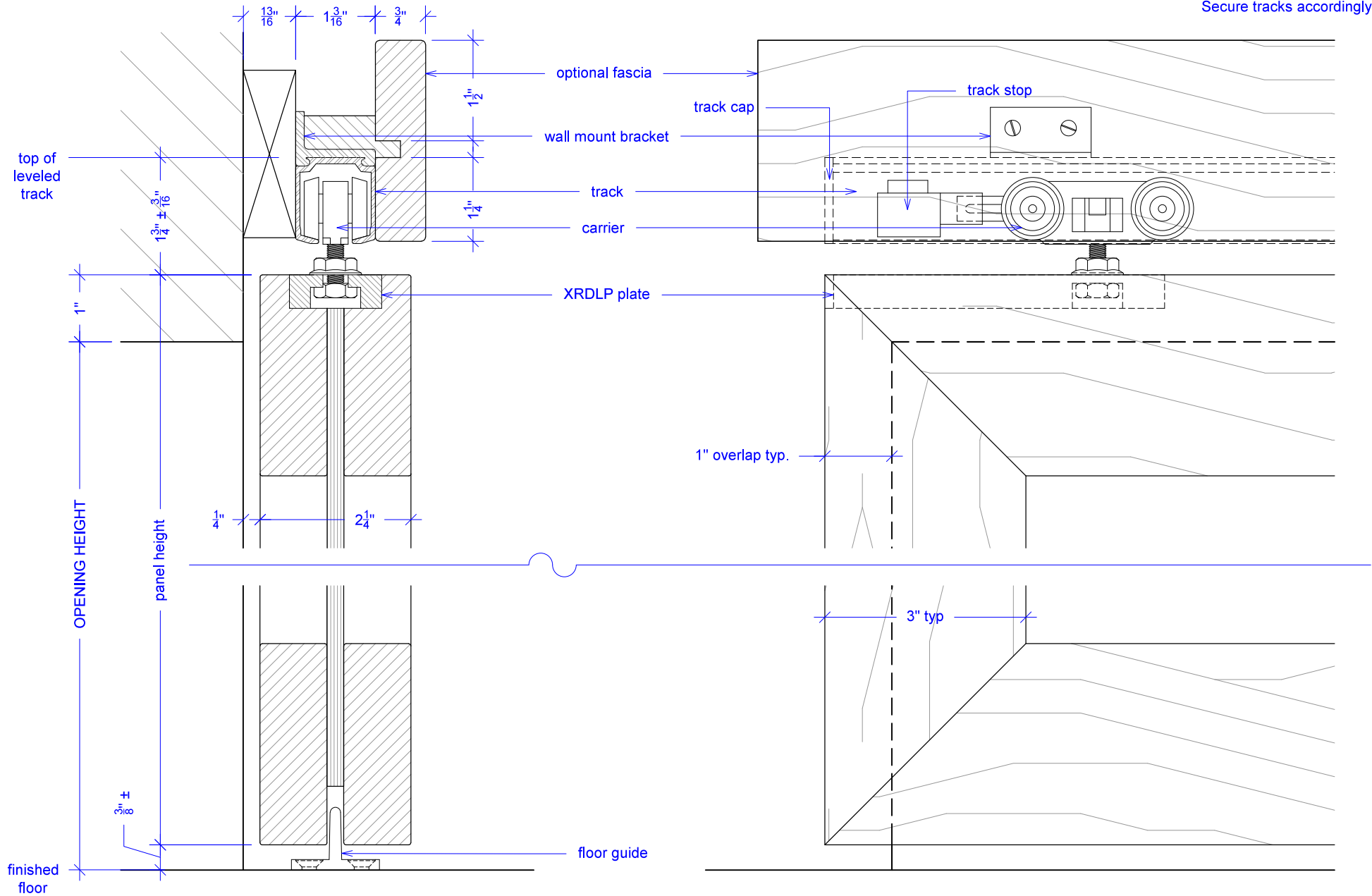
OPENING WIDTH



S2S - WM - 225



NOTE: each panel weights approximately 75-110 lbs.
Secure tracks accordingly.





NOTE: each panel weighs approximately 75-110 lbs.
Secure tracks accordingly.

