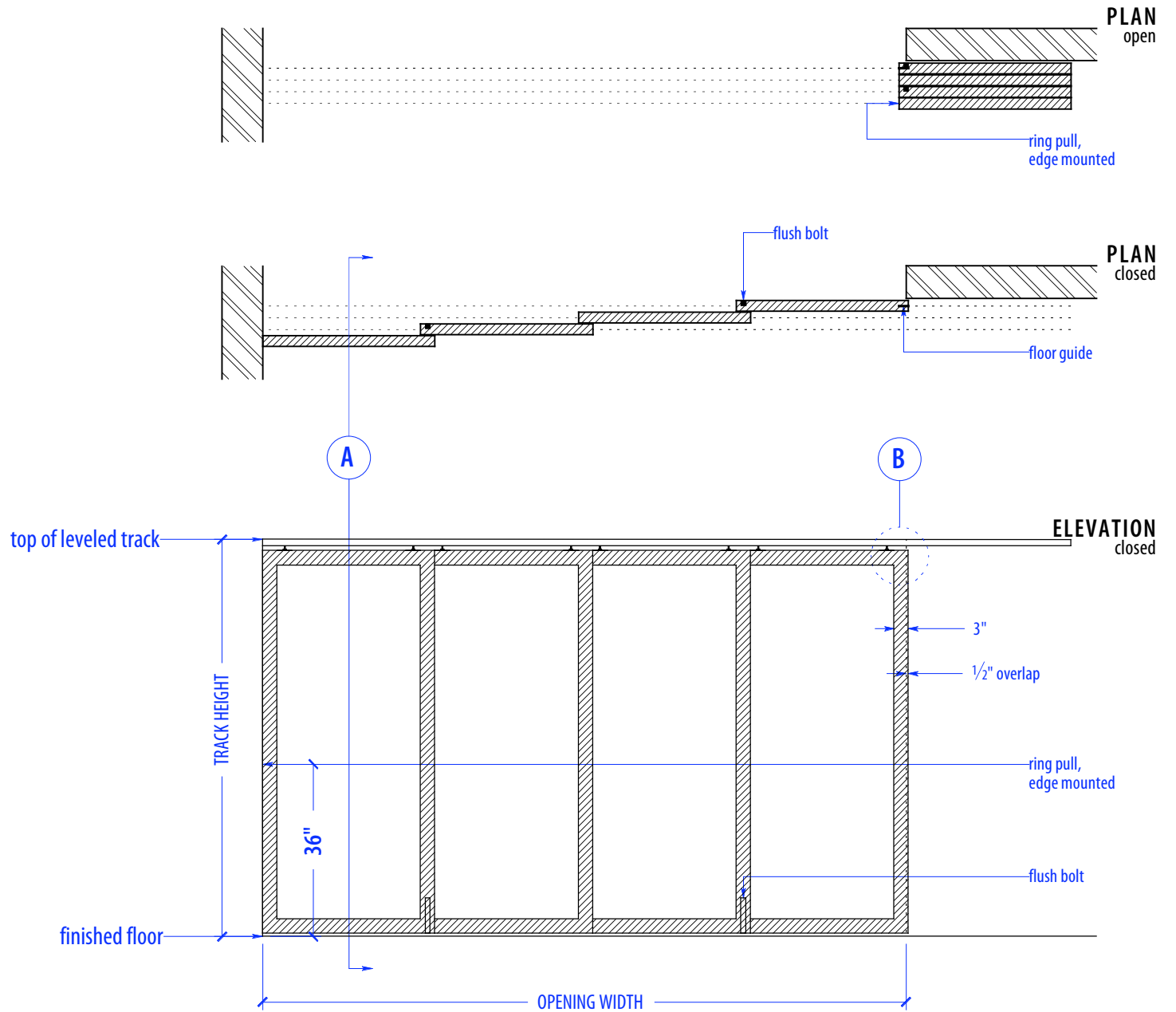




| HEIGHTS | | |
|---------|-----------------------|--------------------------|
| Door | Standard Track Height | Low Profile Track Height |
| 80" | 83" | 82 1/4" |
| 92" | 95" | 94 1/4" |
| 104" | 107" | 106 1/4" |
| 116" | 119" | 118 1/4" |

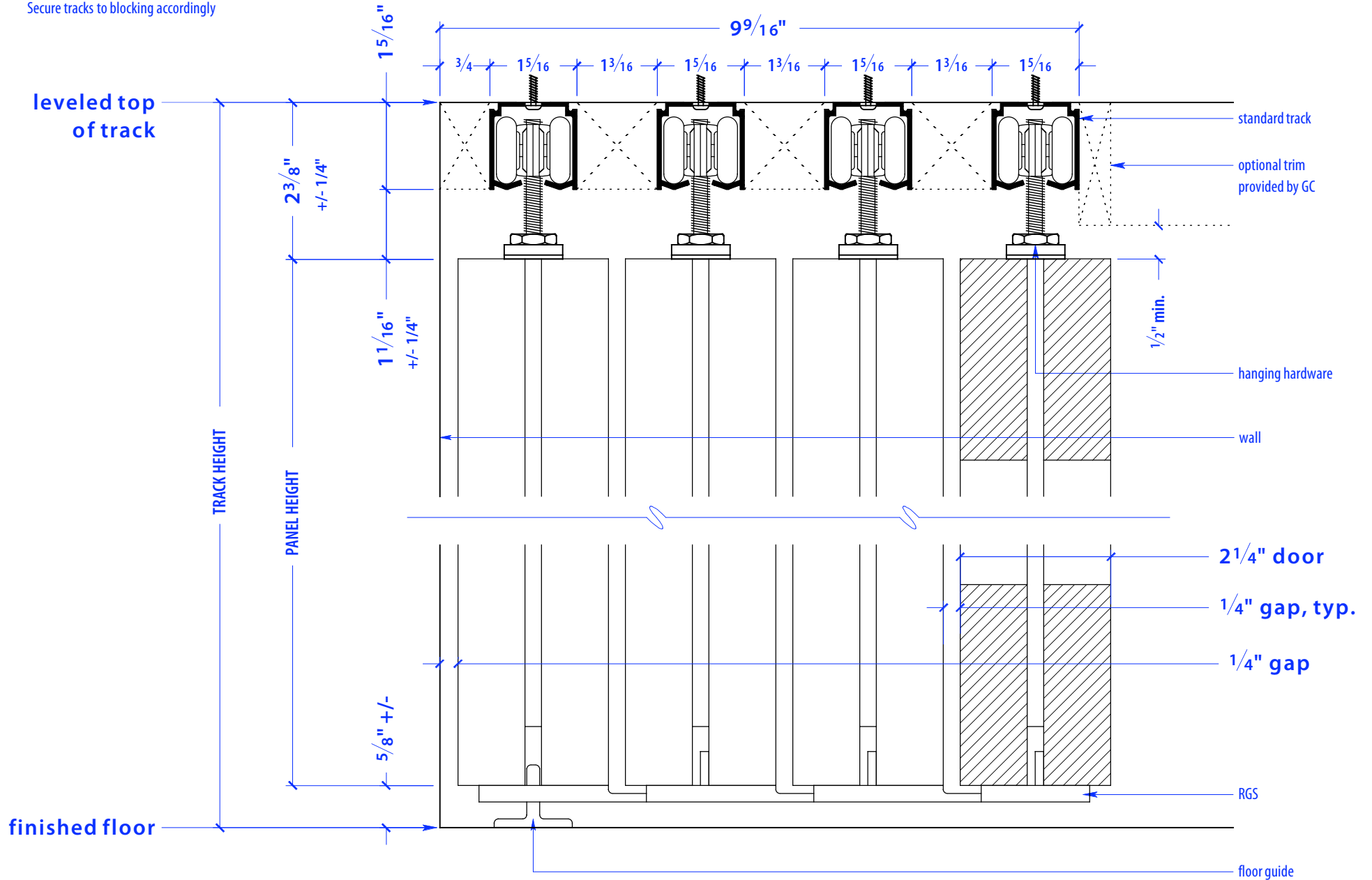
| WIDTHS | |
|--------|------------------|
| Door | Finished Opening |
| 36" | 134 1/2" |
| 41" | 154 1/2" |
| 46" | 174 1/2" |





SECTION A

NOTE: each panel weighs approx. 75-110 lbs.
Secure tracks to blocking accordingly





NOTE: each panel weighs approx. 75-110 lbs.
Secure tracks to blocking accordingly

SECTION B

