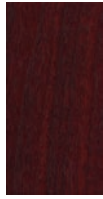


FRAMES



Coffeewood



Cabernet



Rosewood



Teak



Walnut



Zebrawood



White Oak

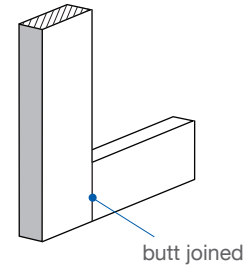


White Maple

Real Wood Veneer

Our most customizable frame collection offers a variety of real wood veneers bonded to a preengineered MDF substrate for reliable stability. Frames are hand sanded, butt-joined and finished with two coats of clear lacquer satin. All frames are fully finished and assembled. Real wood veneers are available in all panel models except for model 175. *See page 3 for panel comparison.*

* Custom stain and paint colors, veneer species, LEED requirements and rail heights may be specified in this collection only. Matching solid core layers can also be specified.



Brown Cypress



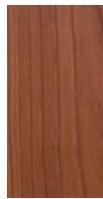
Brazilian Walnut



Mocha Cherry



Walnut



Aged Cherry



Pacific Barley



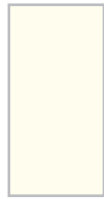
Memphis Cherry



Maple



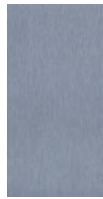
White Ash



Satin White



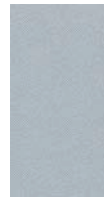
Brushed Aluminum
225 only



Brushed Steel



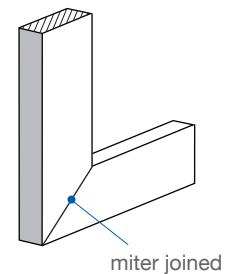
Metallic Muslin

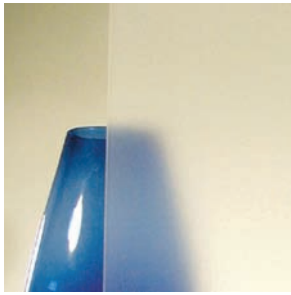


Metallic Mesh

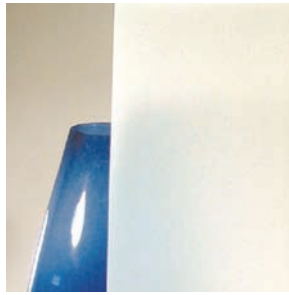
High Quality Laminate

Our laminate collection of frames offers a wide range of carefully chosen vinyls and papers that represent real-looking wood grain and metallic finishes. High quality laminate frames are available in all our product models (225, 225F, 175 and 175F) and a limited collection is available for our Quick Ship (QS) Program. *See page 3 for panel comparison and pages 49-50 for QS program details.*





Clear Frosted



Opal Frosted



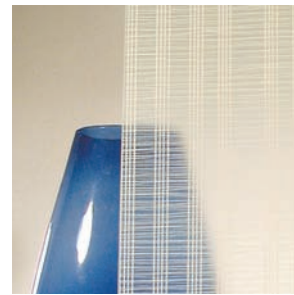
Clear Transparent



Oyster Linen 



Beach Grass 



Searchlight 

Core Layers

Pictured above are only a handful of the many acrylic and resin core options available. Core layers are 1/4" thick and come in a variety of opacities, colors, patterns and encapsulated materials. An optional 1/8" gauge can be substituted in our model 175 product line only. Also available is a solid core option made from veneered MDF. Raydoor works with most third party acrylic and resin sources should you have a specific style in mind.

** Call to discuss custom options*



Coffee Wood

Recyclable Resins

- Our optional PETG resins are available with up to 40% recycled content (depending on finish)
- The production of this PETG creates no hazardous waste or VOC'S.
- PETG + Acrylics are recyclable.